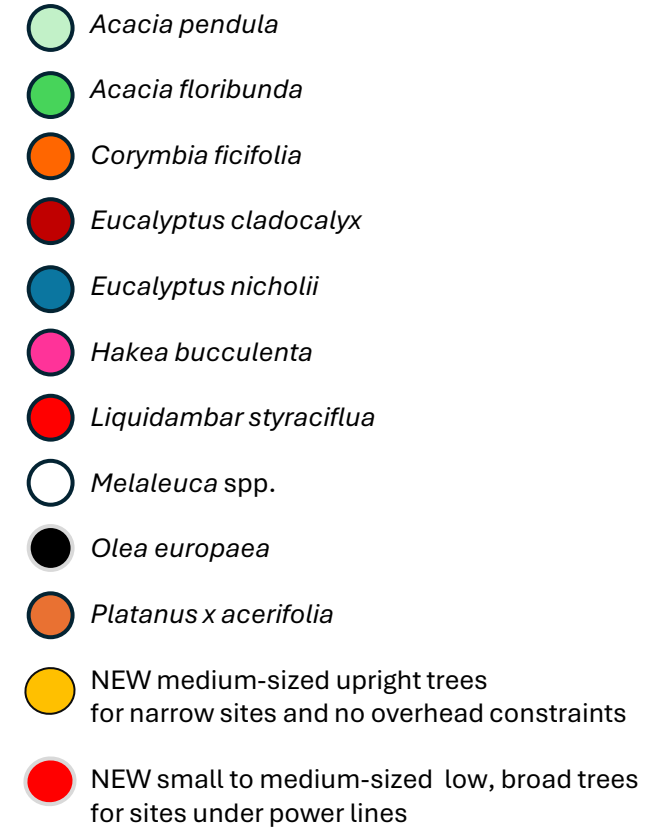
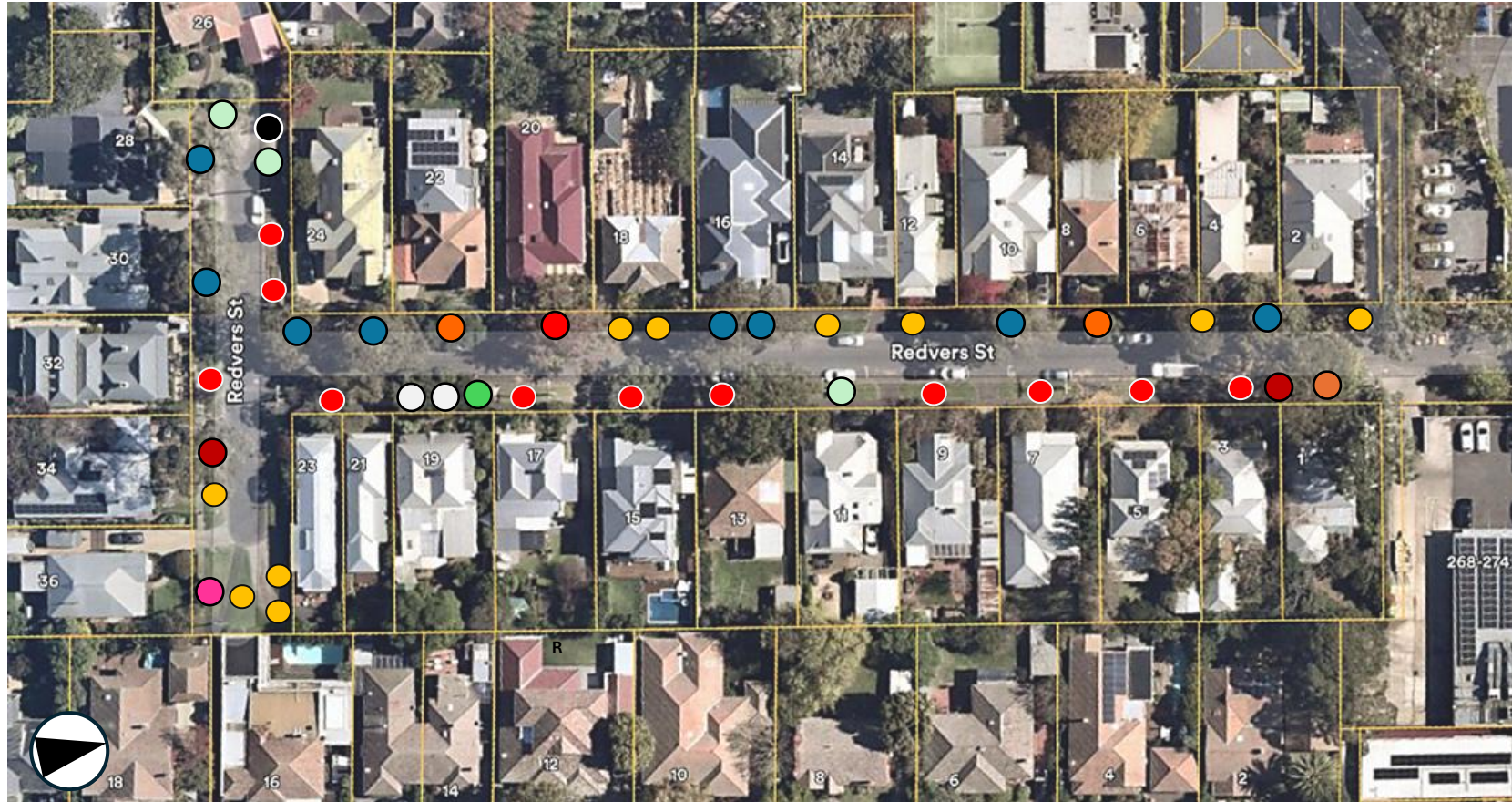


## Map 3 - What Redvers Street could look like



The street will still have a diverse range of trees after removals and new planting, but:

- Underperforming species and specimens have been removed
- Preferred new trees produce a stronger theme along the street, whether more Australian, or mixed Australian/exotic
- The same trees may be planted on both sides of the street, for instance, *Tristaniopsis laurina*, or the two forms of *Zelkova serrata*
- Future vacant sites will be planted with the most appropriate tree or tree form from the most preferred new species.