

Tree Canopy Strategy

2024–2034

Responsible Directorate: Places and Spaces

Authorised By:

Date of Adoption:

Review Date:

The City of Boroondara acknowledges the Wurundjeri Woi-wurrung people as the Traditional Owners and original custodians of this land, and we pay our respects to their Elders past and present.



1 Introduction

Trees are synonymous with Boroondara and important to our community for both their key role in Boroondara's identity and their contribution to climate change mitigation. The treescape has always been the defining feature of Boroondara, particularly large trees which line our leafy streets and parks. The shaded streets, outstanding trees within private gardens, and connected, open spaces of the city define its character, heritage, and sense of place. This treescape provides significant benefits to residents, workers, and visitors and supports a wide range of environmental and economic values.

The Tree Canopy Strategy will guide Council and our community to protect and enhance our tree canopy from 2024 to 2034. It will provide clear guidance about protecting the trees we have and ensure we create new opportunities to plant more trees on both Council and private land. It sets out the City of Boroondara's vision for our tree canopy and provides a clear strategic framework for investment and action.

In 2022 a detailed canopy cover assessment assessed the overall tree canopy cover in Boroondara was 25.7%. This will decrease as the North East Link Project progresses. To increase the canopy cover Council needs to:

- Increase tree numbers to Grow our Tree Canopy
- Retain existing trees to Protect our Tree Canopy
- Improve tree health and growing environment to Maximise our Tree Canopy

Delivering upon these strategic objectives will enable us to increase canopy cover by 2% by 2040.

This target is ambitious and will ensure Boroondara remains one of the most treed inner urban municipalities in Australia.

2 Vision and Purpose

Boroondara will continue to be where the ground is thickly shaded. This requires a growing tree canopy that is resilient and thriving, that maximises benefits for the whole community, and enhances the ecology, character, and amenity of our urban environment.

The strategy will enable Council to increase tree canopy in our streets, parks, and private property by looking after existing trees and investing in new plantings where they are needed most. Developing the strategy is an important step toward elevating the importance of trees as essential assets on both public and private land.

This strategy sets out the objectives and targets that will guide our investment over the next ten years, and which will be benefited by our community for the next 50-100 years.



3 Background

3.1 Strategic Context

Boroondara's Tree Canopy Strategy is supported and influenced by several current strategies and policies (Figure 1). An overview of links between the strategy and key State and Council strategies and policies is provided in this section.

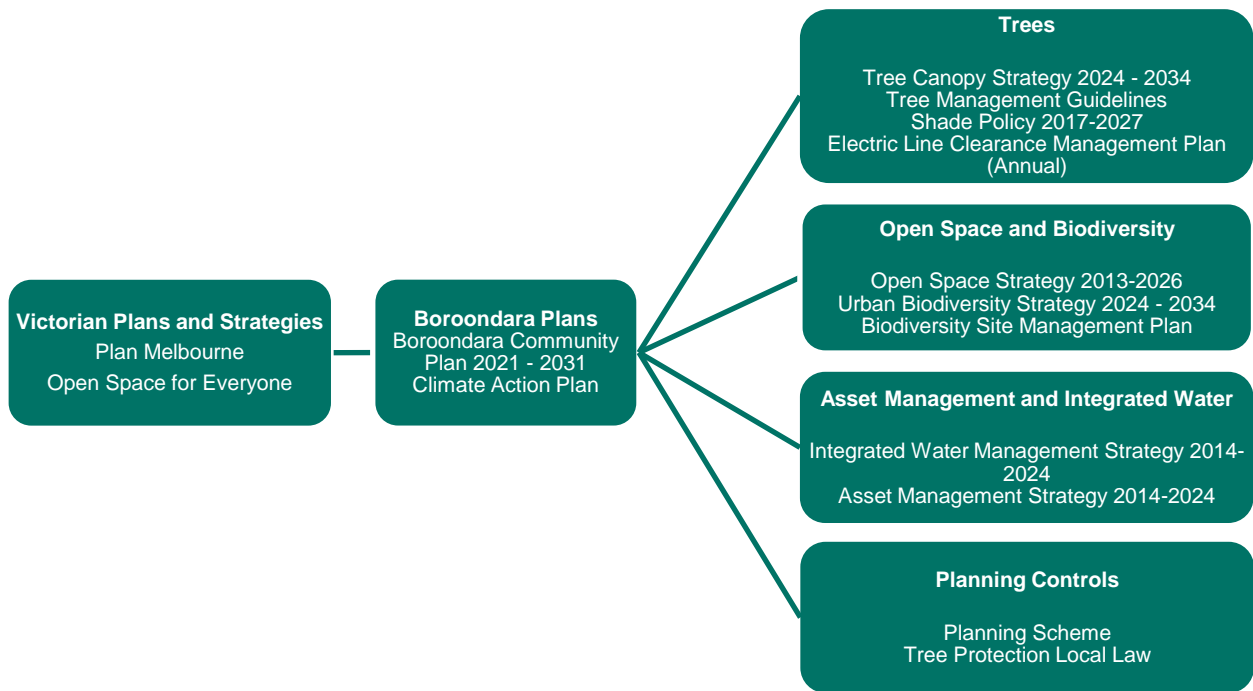


Figure 1 Strategic context of Boroondara's Tree Canopy Strategy

3.1.1 State and Metropolitan Direction

The Victorian Government recognises the challenges faced by urban areas and the communities that live in them. Several strategies and plans respond to these challenges and are relevant to the Tree Canopy Strategy. An overview of these is provided below.

Plan Melbourne 2017-2050



Plan Melbourne is the Victorian Government's plan to manage growth in the city and suburbs to 2050. It outlines how Melbourne will grow for the next 35 years through integrated land use, transport, and infrastructure planning. Outcome 6 of this plan is that Melbourne will be a sustainable and resilient city. A key direction is to make the city greener and cooler. A key action is to support a cooler Melbourne by greening urban areas, buildings, transport corridors, and open spaces to create an urban forest.

While Outcome 6 supports the Boroondara Tree Canopy Strategy, Plan Melbourne is driving densification to support projected population growth. As identified in the threats to Boroondara's tree canopy, densification impacts tree canopy through tree removals for development, reduced planting area, and reduced opportunity for new trees. The targets and actions of Boroondara's Tree Canopy Strategy respond to these challenges.

Open Space for Everyone



Open Space for Everyone is the open space strategy for metropolitan Melbourne. It provides the strategic framework to guide the planning, acquisition, design, management, use, and maintenance of the metropolitan open space network. The strategy includes a vision that 'Melbourne is a city in nature with a flourishing and valued network of public open space that is shared and accessible by everyone.

The strategy includes two goals relevant for trees: to create healthier biodiversity and enhance climate change resilience. One principle underpinning Open Space for Everyone (resilience and sustainability) includes the requirement to protect and strengthen urban forest canopy and the connectivity of habitat corridors.

The Boroondara Tree Canopy Strategy reflects the goals and principles of Open Space for Everyone.

3.1.2 Key Council Strategies and Plans

Boroondara Community Plan 2021–2031

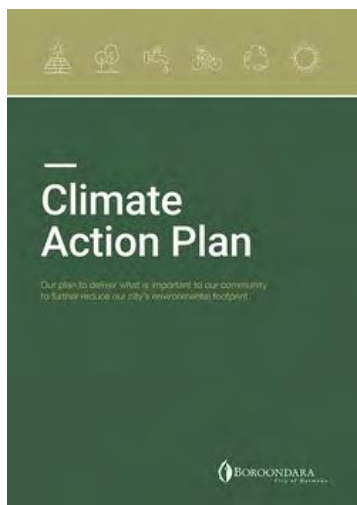


The Community Plan 2021–2031 sets the long-term strategic direction for Boroondara and incorporates the 10-year Community Vision, Council Plan 2021–25 and the Municipal Public Health and Wellbeing Plan 2021-25.

Council has recognised the interrelationships between tree canopy and open space in supporting biodiversity and community health and wellbeing. The Community Plan 2021–31 has identified actions relevant to greening and trees under Theme 2, Parks and green spaces; Theme 3, The Environment; and Theme 4, Neighbourhood character and heritage.

More than 5,000 community members were consulted in 2020–21 during the development of the Boroondara Community Plan. The community identified 33 different areas as the focus for Council, and the Tree Canopy Strategy fulfils three of the top seven focus areas outlined above. The Tree Canopy Strategy will also support Council to deliver on the Boroondara Community Plan health and wellbeing priorities of 'improving mental wellbeing and social connection', 'tackling climate change and its impacts on health', and 'increasing active living' through the many benefits that trees provide to the health and wellbeing of the community.

Climate Action Plan



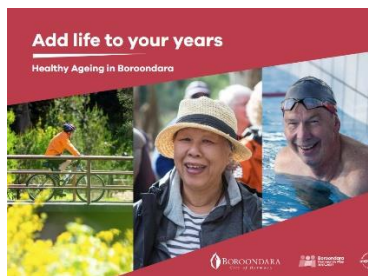
In September 2021, Council declared a Climate Emergency. The Boroondara Climate Action Plan (CAP) provides a framework for Council to plan and deliver actions to reduce harmful emissions from Council's operations, facilitate the reduction of community emissions, and preserve and protect natural assets to meet the challenges of a changing climate. This will help guide Council's climate-related actions into the next decade and deliver wide-ranging social and environmental benefits for the community.

The vision for Boroondara set out in the Climate Action Plan has trees and greening at its heart, clearly recognising their role in absorbing, and storing carbon, and providing habitat and shade.

The CAP Implementation Plan 2023/24 and 2024/25 defines the highest priority actions for implementation over the second two years of delivery.

The CAP sets out an aspirational target to increase tree canopy in Boroondara from 28% to 30%. Within improved data on our baseline position our target is now to increase our canopy cover by 2% from a lower baseline position of 25%.

Healthy Ageing Plan



The Boroondara 'Add life to your years: Healthy Ageing in Boroondara' strategy identifies several impacts on people over 55 that directly relate to the Tree Canopy Strategy, including:

- Parks and green spaces are valuable to the physical and psychological health of older adults.
- From a local and global perspective, older adults in the City of Boroondara value a healthy environment.
- Maintaining parks, gardens and trees are important ways of developing and maintaining neighbourhood character and heritage.

During targeted consultations in 2019 to develop the Healthy Ageing strategy, participants were asked about the factors affecting healthy ageing; 'healthy environments' and 'green spaces' were the most important environmental factors.

Children and Young People's Action Plan



The Children and Young People's Action Plan provides the strategic direction for Council to support the needs and aspirations of children, young people and their families who live, work and study in Boroondara.

Engagement undertaken as part of community consultation for the Children and Young People's Action Plan in 2020 noted feedback across the different groups engaged that support the Tree Canopy Strategy. The environment remained a concern for parents, young people and children. Children believed it was important to protect the environment, especially plants and animals, and parents and young people desired more action on climate change and environmental sustainability.

Placemaking Framework



Vibrant and inclusive local places
through placemaking - a framework
September 2019



The purpose of the Placemaking Framework is to outline Council's approach to how we understand, design, and deliver our public spaces for the wellbeing of our community.

The Placemaking Framework includes examples of potential activations and interventions supported by the Tree Canopy Strategy. One is greening – embedding a sense of nature and greenery into a space for shade, respite, and relaxation.

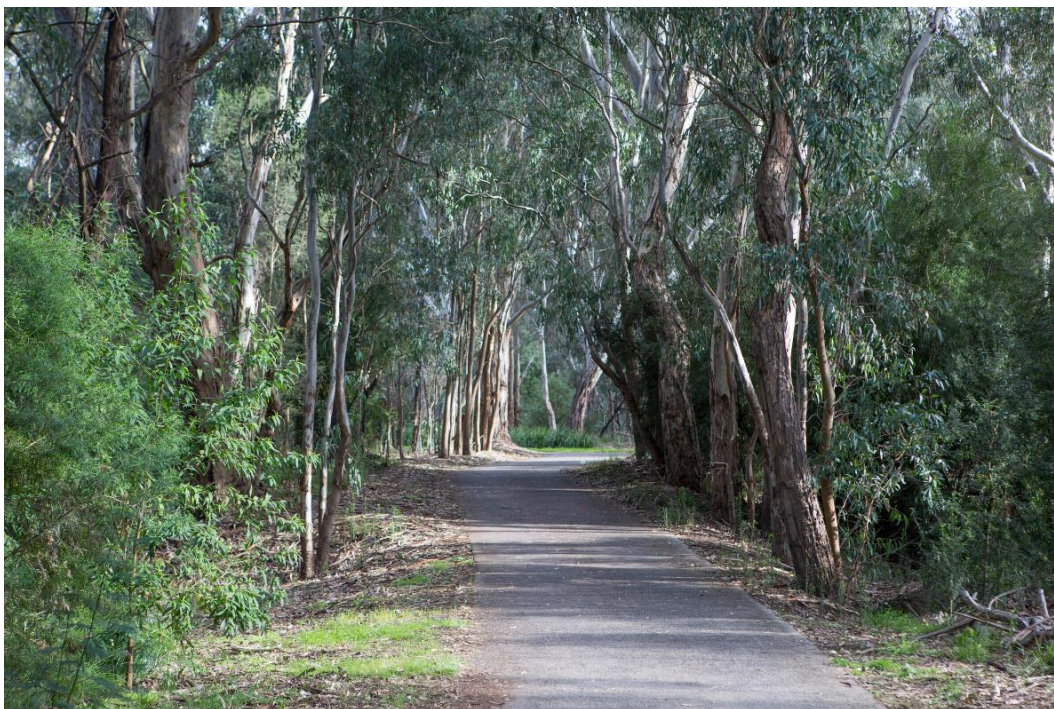
3.2 Tree Canopy

The tree canopy in Boroondara includes trees in streets and transport corridors, parks and nature reserves, private gardens, waterway corridors, schools, and community gardens. It includes all trees and shrubs over 3 metres, from hedges, formal avenues, and large old veteran trees.

Canopy cover is defined as the percentage of an area covered by the canopies of all trees (on public and private land) when viewed from directly above. Canopy cover is a useful and commonly used measurement that allows areas with lower canopy cover to be identified and the gains and losses in tree canopy over time to be monitored.

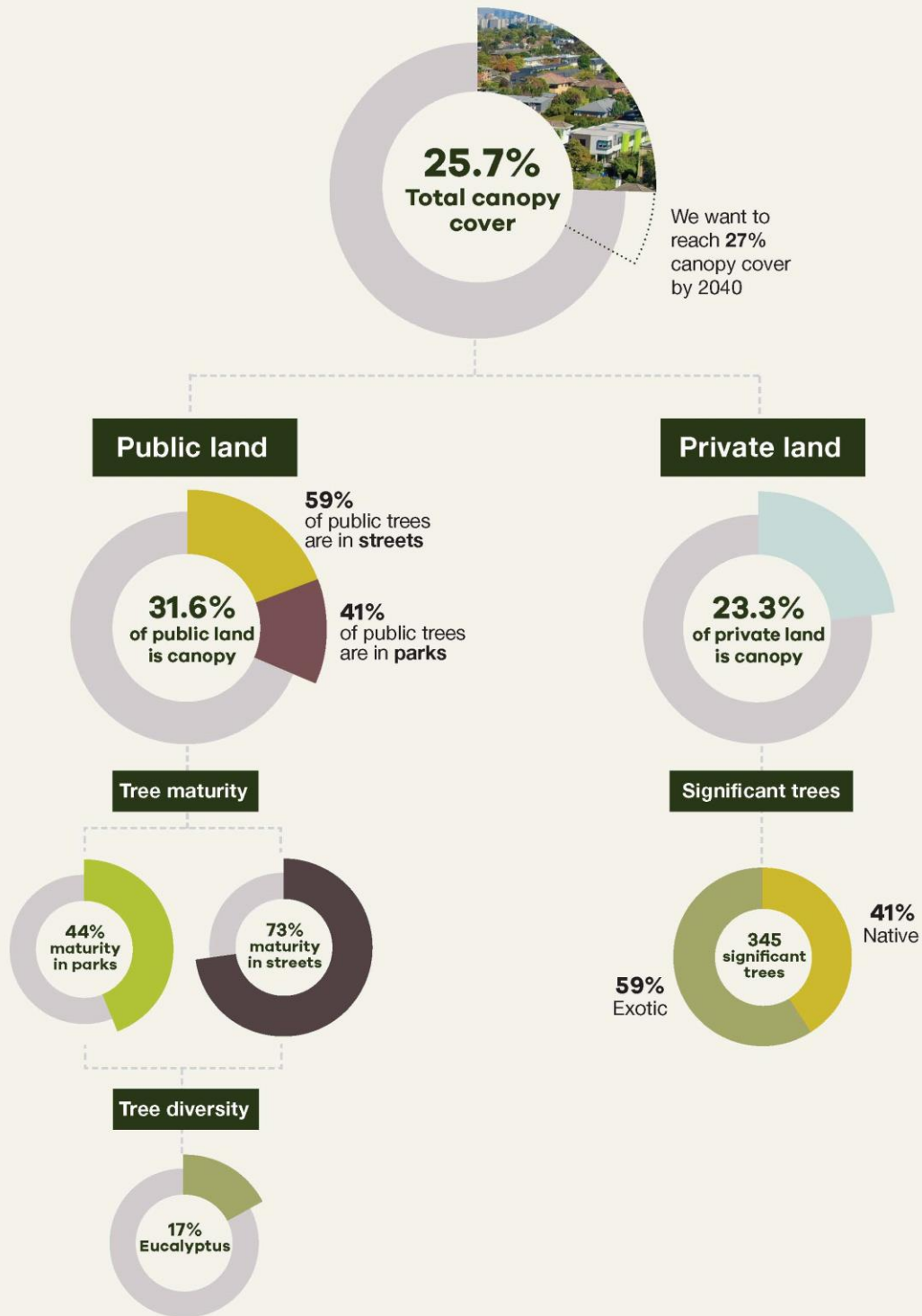
Boroondara covers an area of 60 km², and currently, around 15.4 km² is covered by canopy. This is a good canopy cover for an inner-city municipality, but it still falls short of the State Government's target for 30% coverage across Melbourne.

Boroondara also needs to factor in the loss of trees from major projects, such as North-East Link and Level Crossing Removal, increased housing density, larger single dwellings, and the routine removal of trees as they age and decline.



The aim of this strategy is to increase canopy wherever suitable and practicable. Initiatives may include creating small urban woodlands in our parks for people to walk through; turning parking spaces into tree spaces; adding shade and trees around our local shops; utilising low use open space areas for more dense tree planting; and improving shade cover over our footpaths. However, Council must balance the community's diverse needs when planting additional trees. In parks, this means maintaining open areas for picnics and informal areas for sport and being mindful of issues regarding shade and nuisance around people's houses.

What Boroondara's tree canopy looks like today



To plan for a growing, resilient, and thriving tree canopy in the future, it is important to understand what our tree population looks like today.

Figure 2 Canopy Cover in Boroondara

3.3 Benefits Provided by Boroondara's Tree Canopy

Trees soften the impact of built form such as houses, power poles and hard surfaces to create a natural setting. They provide quantifiable and measurable environmental, economic, and social benefits to our community and literally grow in value every year.

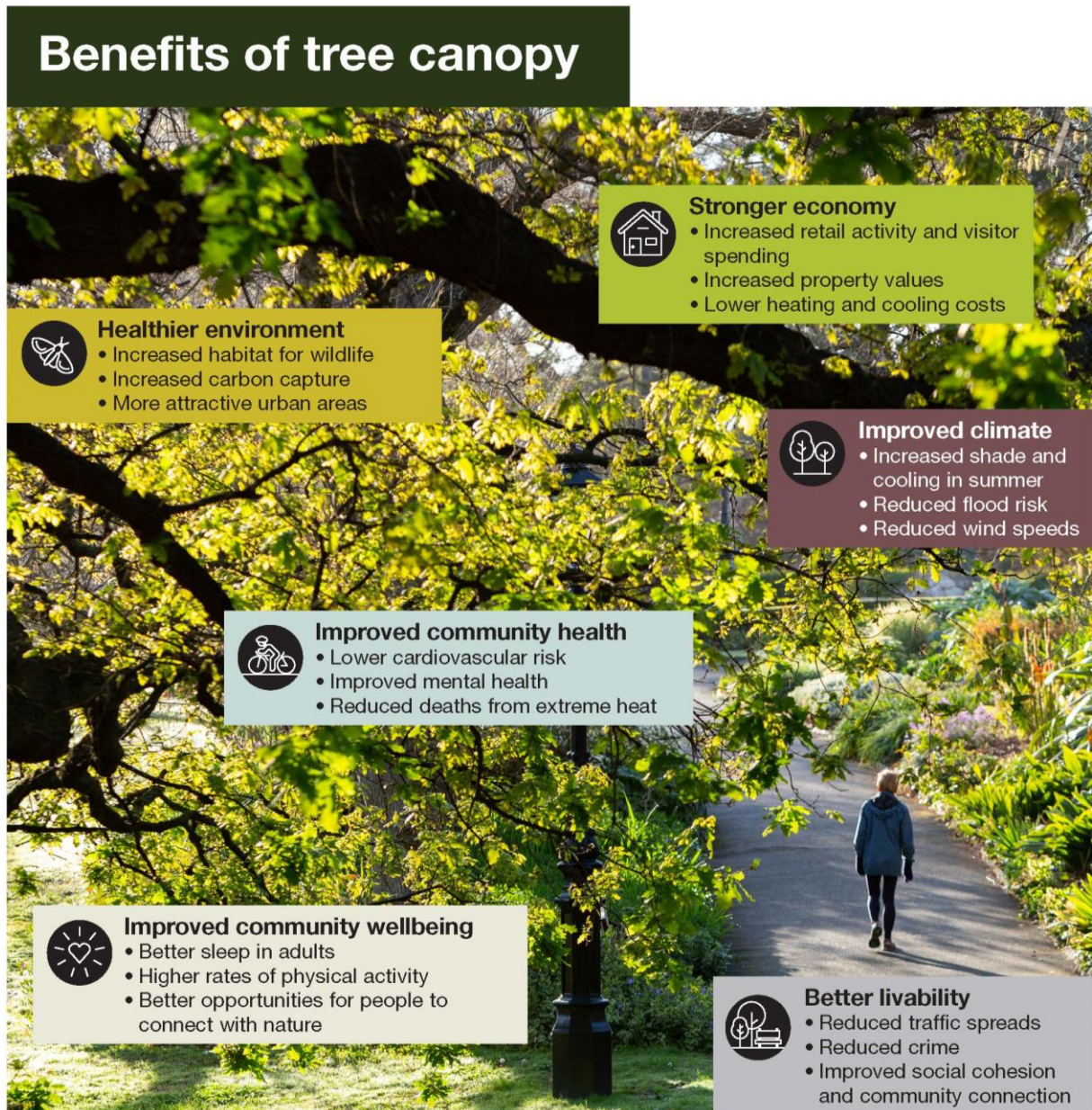


Figure 3 Benefits provided by Boroondara's tree canopy

3.4 Canopy Cover in Comparison to Other Municipalities

Boroondara is bordered by Manningham, Whitehorse, and Monash Councils to the east, Stonnington to the south, Yarra to the west and Banyule to the north. In terms of an urban setting, Boroondara is most like its neighbours Stonnington, Yarra, and Banyule.

Several comparisons between the canopy cover of councils have been undertaken over the last few years. In 2018, the Department of Environment, Land, Water and Planning compared councils across Victoria (Figure 4).

A further study by Greener Spaces Better Places (2020) compared canopy cover for councils across Australia. It measured canopy cover and compared councils based on green cover percentage, rainfall, degree of urbanisation, and traffic. This study classified Boroondara as an Urban, Compact, and Low Rainfall type and determined that we were the leader for canopy cover across Australia in this classification.

Based on these studies and comparisons, we can consider ourselves fortunate and thankful to the community and previous decision makers for the canopy cover we have.

Vegetation Cover and Tree Canopy (2018)

Inner South East Region - Urban and Non-urban Areas

Tree Canopy Cover by LGA (%)

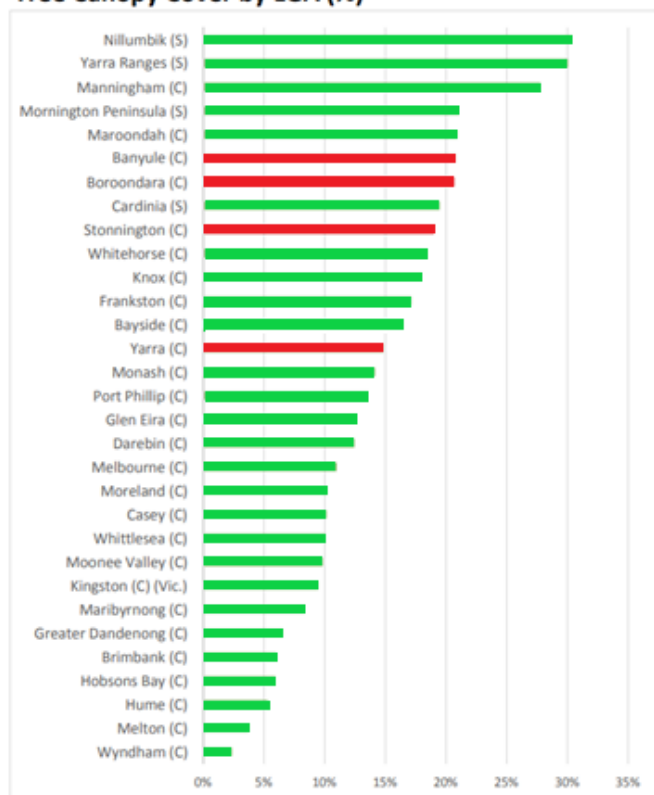


Figure 4 Tree Canopy Cover by LGA (Department of Environment, Land, Water and Planning, 2018)

3.5 Canopy Cover by Suburb

Canopy cover is not evenly distributed across Boroondara. High-resolution aerial imagery captured in 2022 enables us to identify patterns of canopy cover at different spatial scales. The map on this page shows the total canopy cover in each of Boroondara's suburbs, which shows that the suburbs with the lowest canopy cover levels are in the municipality's south and southwest.

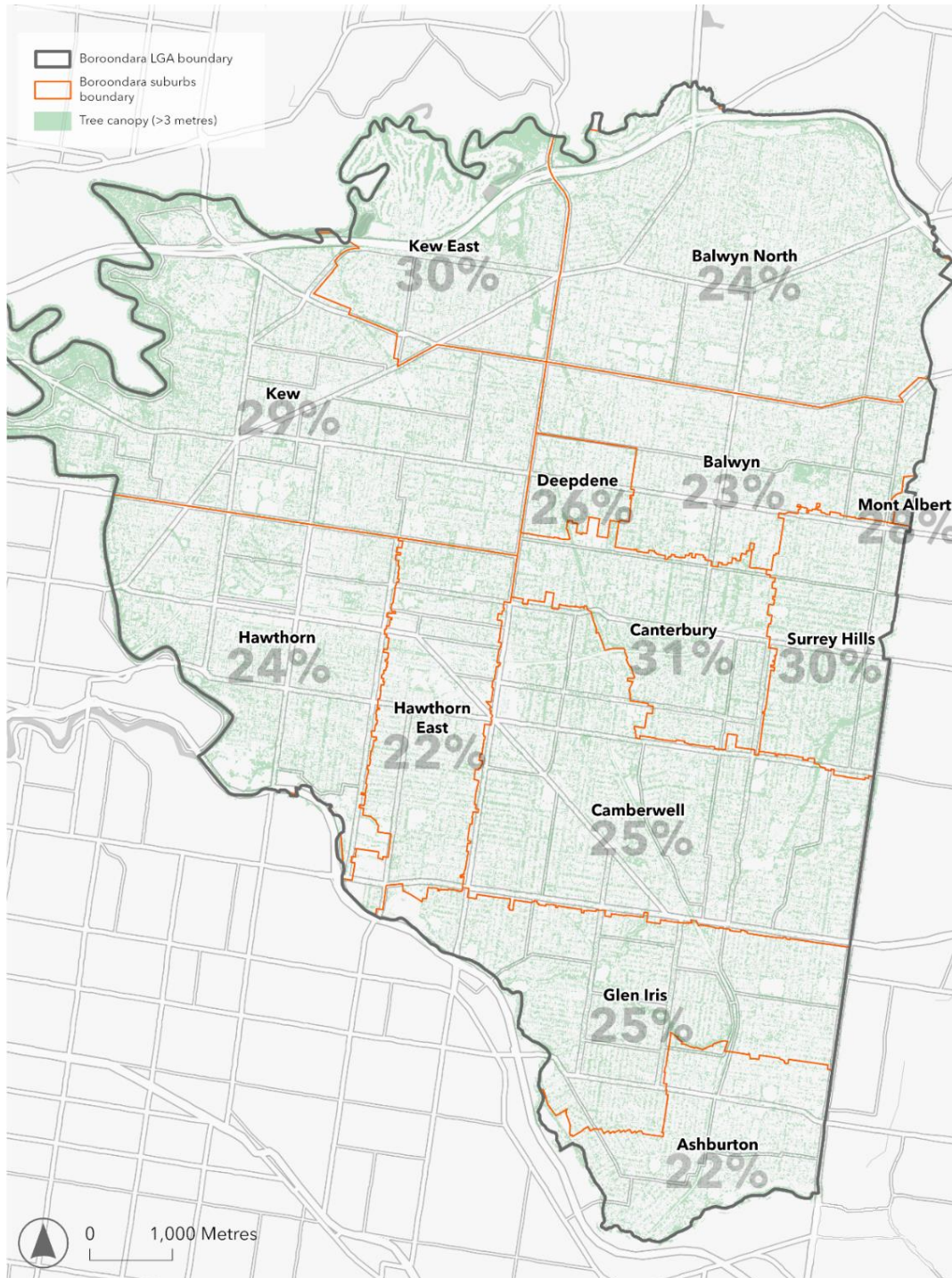


Figure 5 Canopy cover in each suburb (ArborCarbon, 2022)

More detailed patterns of canopy cover emerge when canopy data is considered within smaller areas (one-hectare hexagons), as shown below. There are areas with high canopy cover (dark purple) along the Yarra River corridor in Kew and Kew East, and throughout Canterbury and Surrey Hills. Areas of low canopy cover (yellow) are generally along major roads and intersections (e.g. Burwood Road and Camberwell Junction) in industrial areas and shopping centres (e.g. around Tooronga Village).

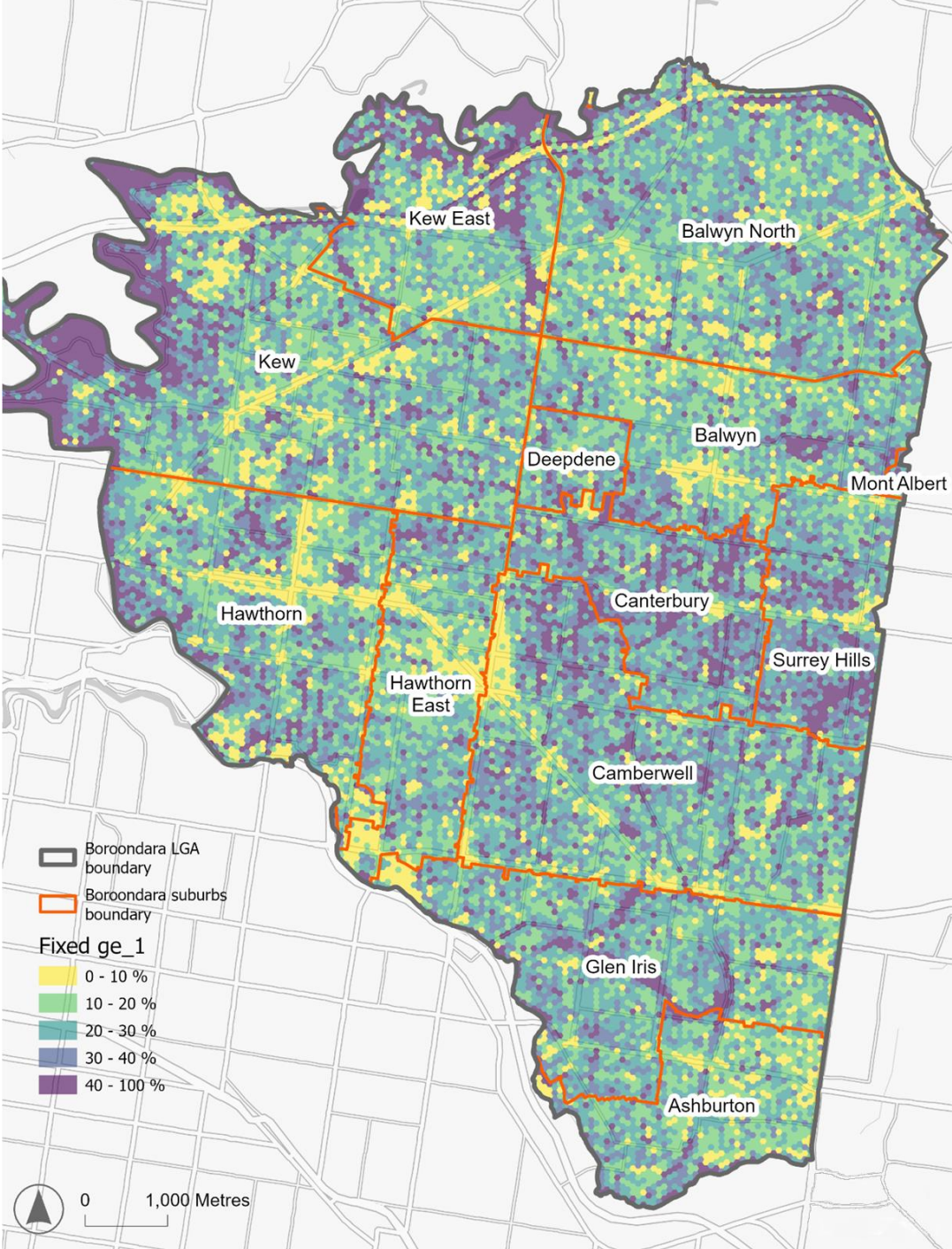


Figure 6 Canopy cover aggregated to one-hectare hexagons.

3.6 Changes In Canopy Cover

Understanding how the canopy has changed over time is important to identify areas where the canopy is most under threat. The map on this page shows changes in canopy cover between 2014 and 2018 (Figure 7). The most significant canopy loss (red) was in Balwyn North, Balwyn, Canterbury, and Surrey Hills. The areas that have experienced the greatest increase in canopy cover (green) are Kew East, Kew, Hawthorn, and Hawthorn East.

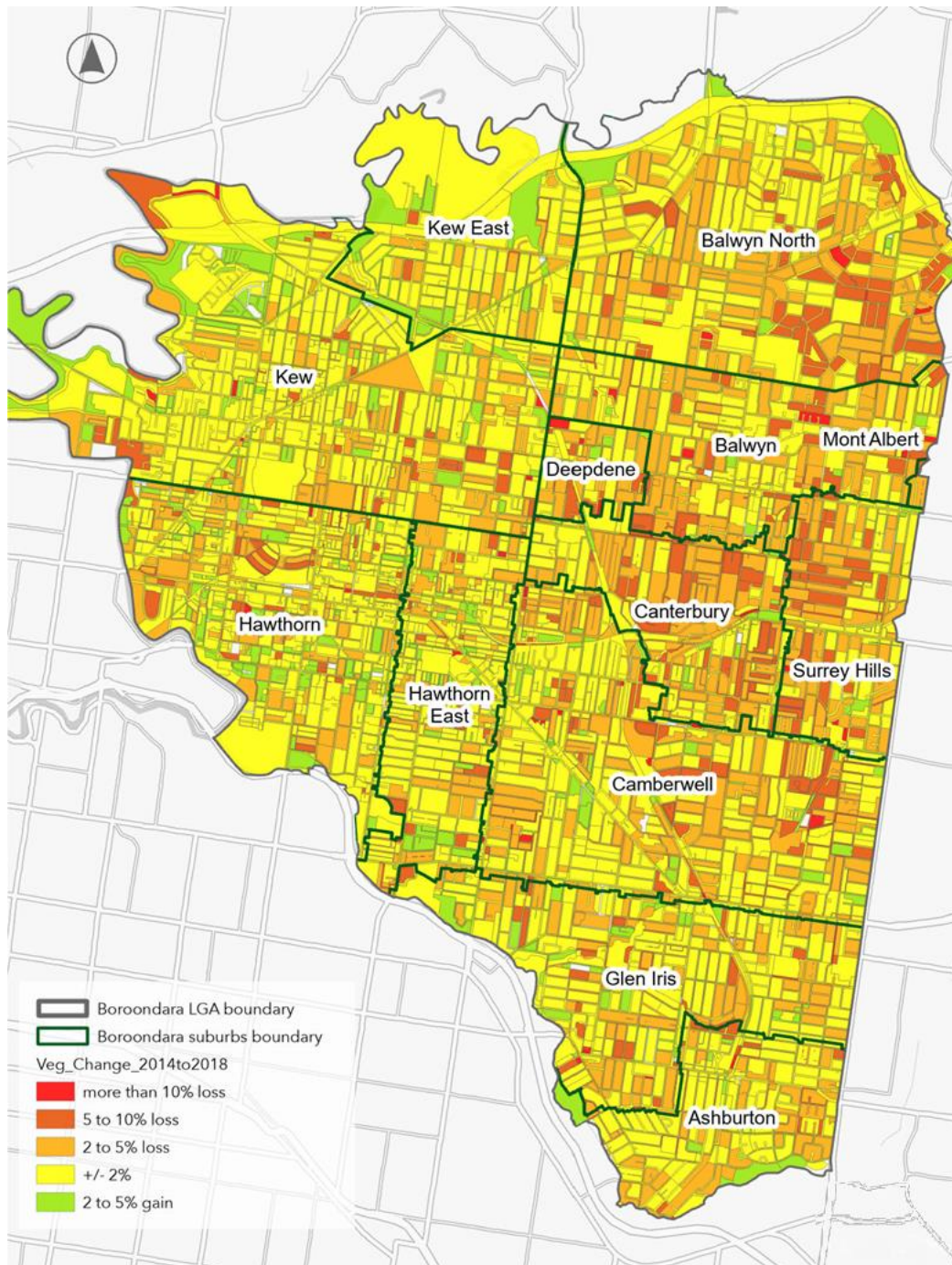


Figure 7 Changes in canopy cover (2014-2018). Data from DEECA.

3.7 How Council is Currently Managing the Tree Canopy

Council has the following mechanisms and guidelines for protecting and managing trees:

- The Boroondara Planning Scheme
- The Tree Protection Local Law
- Tree Management Guidelines
- The Protection of Council Assets and Control of Building Sites Local Law

These mechanisms are used to achieve the Boroondara Community Plan 2021–2031 strategies and reflect the community's long-held interest in maintaining its treed neighbourhoods that retain the heritage values and local character.

To achieve this Council has two passionate and knowledgeable teams that manages the:

- Maintenance, removal, and planting of trees on Council land, responding to resident concerns, maintaining clearance around powerlines; and
- Rigorous assessment of applications for tree removal and development, proactive inspection of building sites, investigation illegal tree works; as well as providing general advice to the community about trees on their properties.

Every year approximately 700 canopy trees are removed from private land and 800 trees are removed from our streets and parks. Trees are removed because of their advanced age, poor health, or structure, and because of issues related to where they are located.

Replacing the trees lost each year requires significant resources, planning, and investment. Trees removed each year cannot always be replaced due to the impact of new developments and the need to increase housing supply. This results in a loss of available space on private land to plant trees and the loss of land to plant trees in our streets, particularly when additional driveways are needed. Finding and creating new spaces and planting more trees is therefore critical to ensuring we maintain and improve our tree canopy.

Historically, we have planted around 900 trees a year in our streets and parks. However, in 2022 and 2023, we increased this commitment to planting 2,000 trees a year. The selection of species for new plantings is guided by a range of factors, including tolerance for predicted climate changes, neighbourhood character, existing trees, soil types and soil moisture conditions.

Council has increased its investment in tree planting on public land by creating a Tree Planting Officer role and increasing the maintenance period for new trees from two to three years. During this period, we water and carry out formative pruning on new trees to give them the best opportunity to grow and thrive.

On private land Council has increased its investment in education and enforcement of tree protection on building sites through the creation of the Landscape Compliance Officer. This has increased tree protection on development sites outside of the planning

scheme control and has improved tree protection knowledge amongst builders working in Boroondara.

Council also works towards maintaining our trees around powerlines and invests in upgrading powerline infrastructure to maintain high-value avenues. However, we also advocate for changes to the powerline regulations so that the value of tree canopy is recognised, and pruning can be reduced to retain more canopy.

Our tree teams work alongside internal civil teams to avoid and minimise tree removal for Council infrastructure works where possible, though sometimes trees must be removed if they cannot be safely retained while works are undertaken.

The extent of Boroondara's tree canopy depends both on the growth of new and existing trees and the planting of new trees. We recognise that investing in quality stock, providing early maintenance, selecting the right locations, and monitoring tree retention are crucial to a growing, resilient, and thriving urban forest and expanding tree canopy.

3.8 Threats to Boroondara's Tree Canopy

The urban environment can be difficult for trees, with many threats limiting their ability to survive and thrive. Some of the main threats to Boroondara's tree canopy are illustrated below.

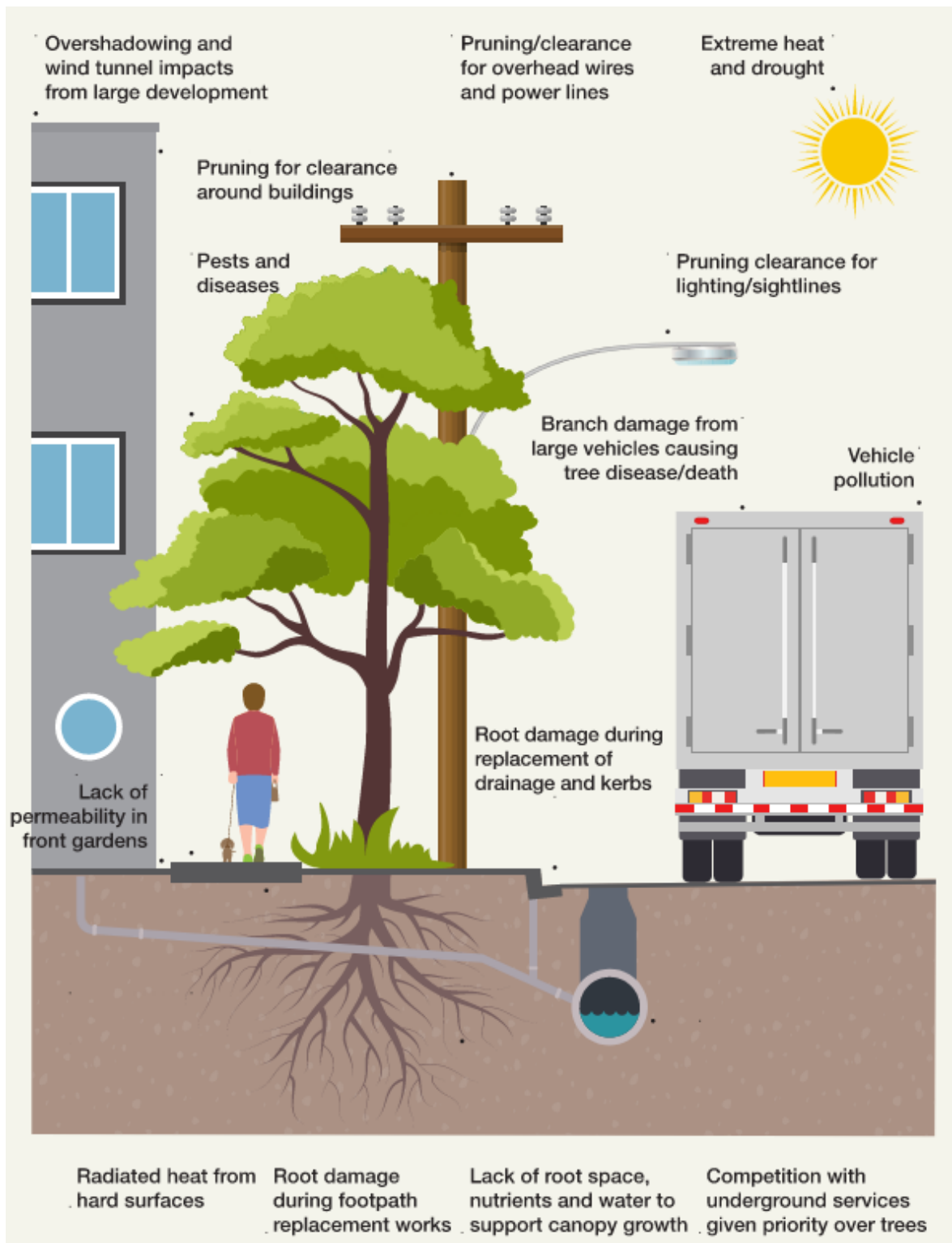


Figure 9 Threats to the urban forest and tree canopy

4 Challenges

4.1 Trees on private land

Some challenges in managing tree canopy on private land result from the statutory limitations of tree protection regulations; pressures caused by increased urban densification and the increased size of single dwellings; community attitudes; and some relate to available in-house data and expertise. In summary, these challenges include:

- The Boroondara Planning Scheme provides limited statutory authority over the protection and retention of trees.
- Trees are considered an element of the landscaping design for residential developments, but the Planning Scheme has limitations in providing sufficient space for new or replacement tree planting.
- Decisions about tree planting on private land are made on a site-by-site basis and do not have strategic direction.
- The Tree Protection Local Law has limitations for new single dwellings where a planning permit is not required.
- There is limited capacity to monitor and check compliance with planning permit and local law permit conditions requiring replacement tree planting over time.
- The disincentives to comply with tree protection and retention requirements of the Boroondara Planning Scheme and Tree Protection Local Law are inadequate.
- Lack of resources to enforce tree planting conditions.
- The trend of increasingly large dwellings with little or no green space around them.
- Increasing car ownership driving demand for parking and basement carparks for single dwellings, resulting in larger driveways and loss of soil for basements; and
- Community expectations about the level of maintenance trees require, including clearing underground pipes, gutter and property cleaning.

4.2 Trees on Council land

Some challenges in managing tree canopy on Council land relate to all the different needs and stakeholders that Council land, including roadways and footpaths, must accommodate. This includes all of Council's road, drainage and footpath infrastructure; the infrastructure for all other services; community expectations for summer shade and winter lighting; property damage claims; traffic sightline requirements; and improved sporting and childcare facilities.

In summary, these challenges include:

- Tree planting carried out without a strategic plan. Instead, it is based on a reactive basis following tree removal, as part of street tree renewal projects, or from resident requests
- Community concerns about tree size and risk, shading, and mess from trees
- The loss of nature-strip area to new and wider driveways.
- The limited regulatory protection for public trees.

- Damage to trees from infrastructure renewal and upgrades.
- Increased housing density resulting in loss of soil space for tree roots and an increased number of driveways.
- Damage from the installation of underground services, particularly underground power connections to new dwellings and developments.
- Managing trees with regards to sufficient street and path lighting in winter months.
- Providing sightlines across parks and reserves to allow for passive surveillance.
- Managing the risk of damage to private property.
- Resourcing additional tree planting.
- Resourcing to support projects to create new tree opportunities and to protect existing trees.
- Managing trees according to the Tree Management Guidelines 2010, which need renewing.
- Canopy loss from pruning trees to maintain the required clearances in line with powerline clearance regulations.
- Council's tree data is quite outdated in some areas and stored across multiple systems. This is a barrier to making strategic decisions about managing the tree population.
- Maintaining an appropriate balance of open space usages including active and passive recreation, biodiversity areas and tree canopy.

4.3 Additional Challenges

The Surrey Hills Level Crossing Removal and the North-East Link Project are two additional challenges to our canopy cover.

Considerable tree removal has occurred along the rail corridor and surrounding Surrey Hills Station as part of the Surrey Hills Level Crossing Removal. Council is working with the project to have replacement trees planted around Surrey Hills and the nearby areas.

North-East Link will result in losing at least a few thousand trees. As the project will work to retain as many trees as possible, the final number of removed trees will not be known for some time. However, North-East Link has committed to planting two trees for each one they remove, and a few canopy replacement projects are already underway.

This canopy loss will take decades to replace, just as we are trying to increase canopy.

5 Targets and Strategic Objectives

There are three key targets that Council is seeking to achieve through the delivery of this strategy. Delivery will be focused on three key objectives each of which contributes to achievement of these targets.

5.1 Targets

Achieve canopy cover of 27% by 2040 across Council (including public and private land ownership)

Attain 100% compliance with tree planting conditions required in permits

Ensure that no single species makes up more than 10% of trees on public land

5.2 Objective 1: Grow our Tree Canopy

To increase our canopy cover we need to plant trees wherever it is practical for them to survive and thrive. This requires action across both public and private land.

Typically, urban trees are measured by the amount of canopy cover they provide, the health of the trees, age and spatial distribution, diversity, and habitat provision. An understanding and monitoring of these measures is critical to growing the thriving, resilient and shared forest of the future and realising the vision of this strategy.

The predicted increase in extreme heat days will have more severe impacts in areas of low canopy cover, and predicted increases in intense rainfall events will lead to more flooding in areas of low canopy cover. Priority will be given to tree planting where it is most needed to ensure a distribution of tree canopy that is shared by all.

Actions to deliver on this objective will increase tree numbers, grow future canopy, and provide a legacy for future generations.

5.2.1 Strategic Actions

-
- | | |
|-----|---|
| 1.1 | Increase tree planting on Council land, prioritising areas with lower canopy cover and highest levels of canopy loss |
| 1.2 | Establish partnerships with other landowners and managers to increase tree planting and canopy cover |
| 1.3 | Design and deliver all Council projects in the public realm to provide an increase in canopy cover |
| 1.4 | Inform, educate, and support the community to contribute to improve tree planting on private properties and increase canopy cover |
| 1.5 | Improve Council tree data accuracy |
-

1.6	Regularly measure canopy cover and monitor change to inform planting priorities, management strategies and actions
-----	--

5.3 Objective 2: Protect our Tree Canopy

Tree canopy cover is vulnerable to a range of pressures; a predicted changing climate, increasing urban heat and extreme heat days, urban intensification, and known and new pests and diseases. Our trees need to be protected to support a liveable future urban environment.

Other benefits that can be derived from trees, such as improved air quality, mental and physical health, and connection to nature, all contribute to the current and future wellbeing of the community.

Currently there are approximately 1000 trees removed from private land each year. To ensure this number is minimised and the canopy cover on private land is at least stabilised, if not improved, a number of actions are required.

5.3.1 Strategic Actions

2.1	Pursue broad regulatory protection policy for public and private trees
-----	--

2.2	Improve enforcement for the protection and retention of existing and newly planted trees
-----	--

2.3	Develop minimum canopy cover measures on new private residential and commercial property developments
-----	---

2.4	Become an industry leader in best practices and innovation for the protection, maintenance, and management of urban trees
-----	---

5.4 Objective 3: Maximise our Tree Canopy

Cities worldwide regard trees and living infrastructure as critical assets to meet the predicted climate challenges and enhance urban resilience and liveability. The environmental, social, economic, and cultural benefits of trees are well established and beyond doubt. It is recognised that increasing the size, health and resilience of a tree population will directly increase the benefits provided by its canopy cover.

This theme looks at how the design, management and integration of trees fully maximise their benefits. The significant return on investment in trees and canopy cover far outweighs the cost of installation and maintenance.

A diversity of climate-ready species is integral to a healthy, resilient canopy cover that can tolerate changes in temperature and rainfall. Healthy trees require a healthy environment to thrive, and creating ideal below-ground conditions is essential to support strong, healthy growth.

Trees are long lived, and the species we plant now will need to tolerate future climates and urban conditions. We need to identify existing and future vulnerabilities and risks and mitigate against them to grow a more resilient tree canopy for the future. We also need to manage our aging tree population so that we do not have large areas impacted by significant tree removals in short periods of time.

Integration of trees in the urban landscape will optimise the connections between the grey (structures, hard surfaces), blue (water) and green (trees, vegetation) infrastructure. This promotes a resilient, shared, and growing tree canopy essential for community health and wellbeing.

5.4.1 Strategic Actions

3.1	Deliver a coordinated and integrated approach for tree canopy management
3.2	Ensure a diverse range of climate-ready tree species are planted
3.3	Advocate for improvement for canopy protection around powerlines and other infrastructure assets
3.4	Utilise engineering and best practice arboriculture solutions to improve canopy retention
3.5	Develop renewal programs for significant tree populations within parks and along streetscapes

6 Consultation

Boroondara's tree canopy is valued by the community. In the 2021–2031 Boroondara Community Plan, the community identified protecting and increasing canopy cover on private land as a priority. Most people emphasised the value and importance of trees in open spaces in Boroondara.

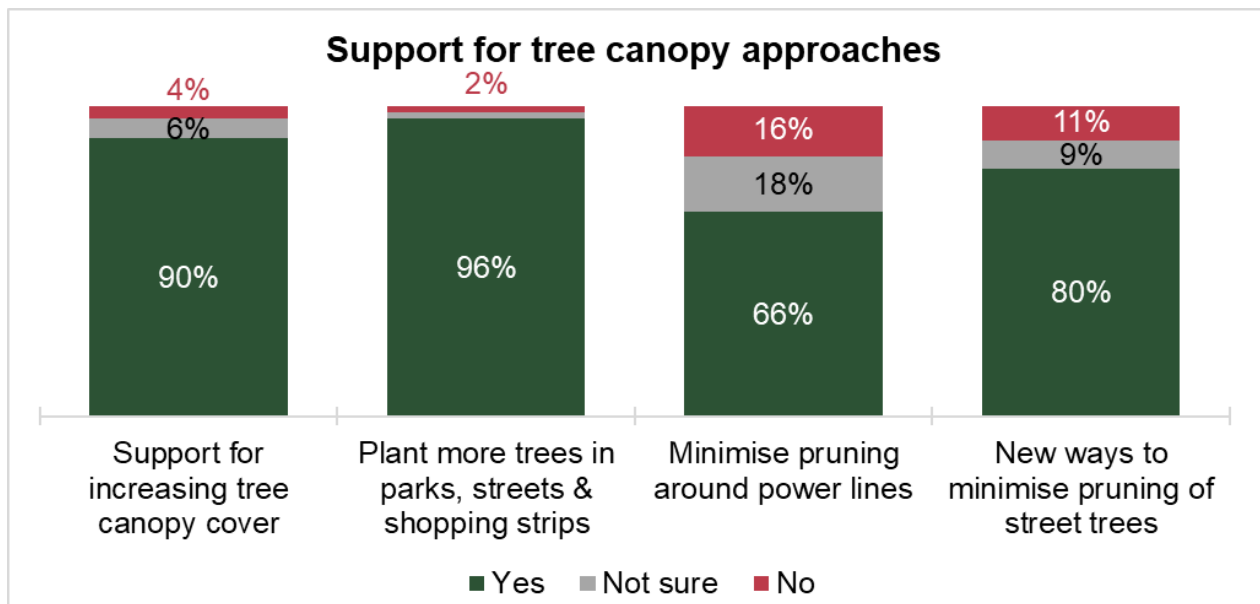
During the consultation for our 2017 Tree Strategy, the community told us that trees were highly connected to many aspects of place and neighbourhood, and that trees added character to the area. More than 95% of respondents thought trees were very important for the future liveability of Boroondara. The key themes that emerged from that consultation were:

- The need to maintain the local green character of Boroondara at the local street level as well as through feature or significant trees.
- The value of trees in providing urban cooling, shade, and clean air.
- Trees are essential for habitat, especially for birds.
- Concerns about the impact of development on trees.
- A preference for more sustainable species of trees that are better suited to the area.

- Education and information about tree management decisions are needed, especially tree removal.

Further, during consultation for the 2020 Climate Action Plan, respondents told us that they wanted us to plant more trees and increase canopy cover. These consultations tell us that the community has been consistent in their desire to protect and increase canopy cover across the municipality.

This Strategy underwent consultation in draft format during May and June 2024 and received strong positive feedback. 674 surveys were completed and the below table summarises the responses.



7 Implementation, Monitoring and Evaluation

The Tree Canopy Strategy has been prepared with a vision for the future and a set of long-term strategic objectives, targets, and actions to be implemented over the ten-year period.

The Environmental Sustainability and Open Spaces, and Urban Planning Departments will lead the strategy implementation. However, the successful implementation of the strategy will require commitment and outcomes from many departments of Council.

A separate two-year Action Plan supports the implementation of the strategy. The Action Plan will be reviewed and refreshed after each two-year period. Council's internal corporate reporting system will be used to monitor the implementation of the strategy's actions. The progression and completion of actions will be monitored annually throughout the life of the strategy.

Progress towards the targets will be measured as follows:

- Canopy cover - full canopy cover assessments will be undertaken in 2029 and 2033
- Compliance with planting conditions - trees planted in accordance with permit conditions, permits amended as required or enforcement actions taken
- Species diversity - annual analysis of public tree data
- Public planting - annual assessment of street trees on planting list/total trees planted

The strategy will be reviewed in eight years to ensure it continues to align with the Council overall vision and direction.



Contact Details

Website: www.boroondara.vic.gov.au

Email: boroondara@boroondara.vic.gov.au

Telephone: 9278 4444

After hours emergencies: 9278 4444

Postal address: Private Bag 1 Camberwell VIC 3124

Customer Service centres: Camberwell office 8 Inglesby Road, Camberwell Hawthorn Arts Centre 360 Burwood Road, Hawthorn Kew Library Corner Cotham Road and Civic Drive, Kew

For speech or hearing impaired: National Relay Service TTY 13 36 77 Speak and Listen 1300 555 727 Free interpreting service: 9278 4002